

Walk-in Chambers



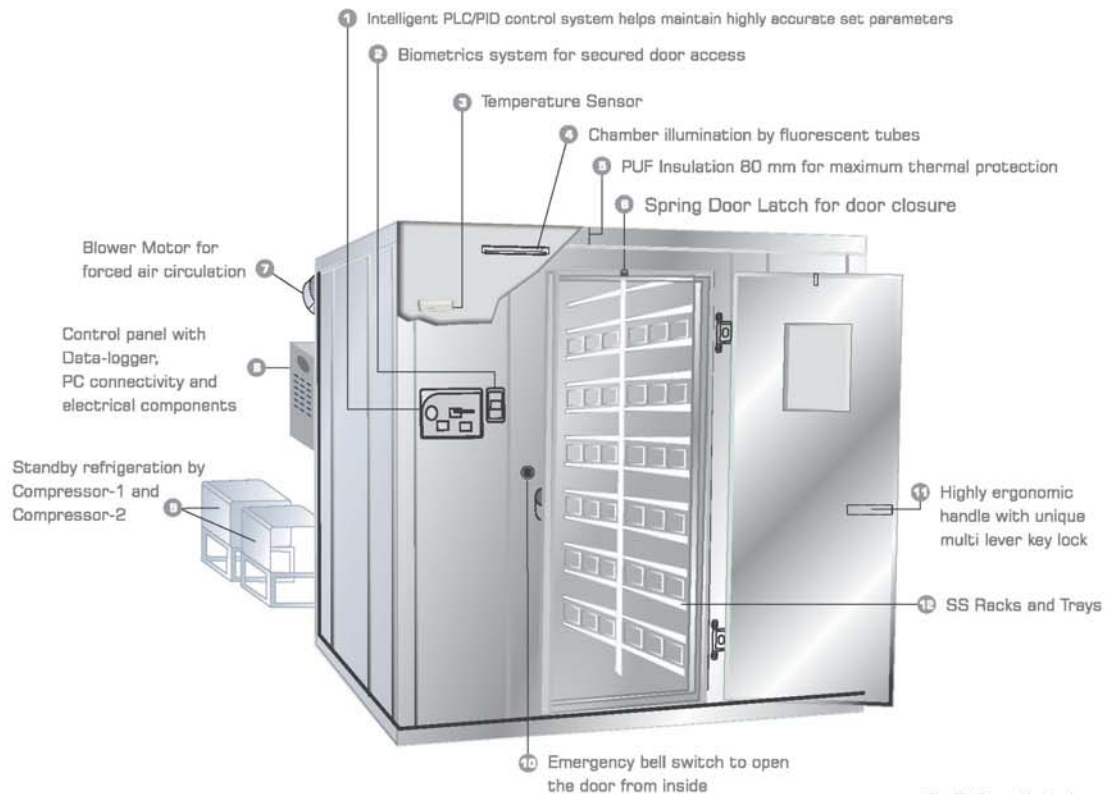
Walk-in Chambers

REMI Walk in chambers are designed for monitoring & control of temperature to meet the storage requirements of whole blood and packed red cells. All these chambers are double walled & modular in construction, easy to assemble at site. They are available in standard sizes & can also be tailor made to suit specific requirements. Forced air circulation with the help of fan blower maintains uniform conditions. Use of intelligent control systems & dedicated REMI *'DataSoft'* software complying to 21 CFR Part 11 requirements greatly enhances the performance. These chambers can be provided with standby refrigeration system (optional) for uninterrupted functioning.

CONSTRUCTION: • Double walled prefabricated modular panels with PUF insulation, easy to assemble at site • Standard model with inner of Stainless Steel (304 Grade) and outer Powder coated steel sheet • CFC free Refrigeration system with split type condensing unit located outside blood bank helps to emit hot air beyond working area • Forced Air Circulation by heavy duty motor • SS drawers with rack partition for ideal storage conditions.

Salient Feature:

- Temperature Range: 2° C to 6° C, Accuracy: $\pm 1^{\circ}$ C
- Microprocessor based auto tuning PID controller provided for precise control of temperature
- Facility to open the door from inside in case of door locked with emergency bell having switch inside chamber
- Audio visual alarm for temperature variations and utility failures
- Output for remote alarm
- Electrical circuit breaker
- Overload cut off relay for compressor
- Time delay for compressor switch on
- PC communication via Ethernet / RS-485

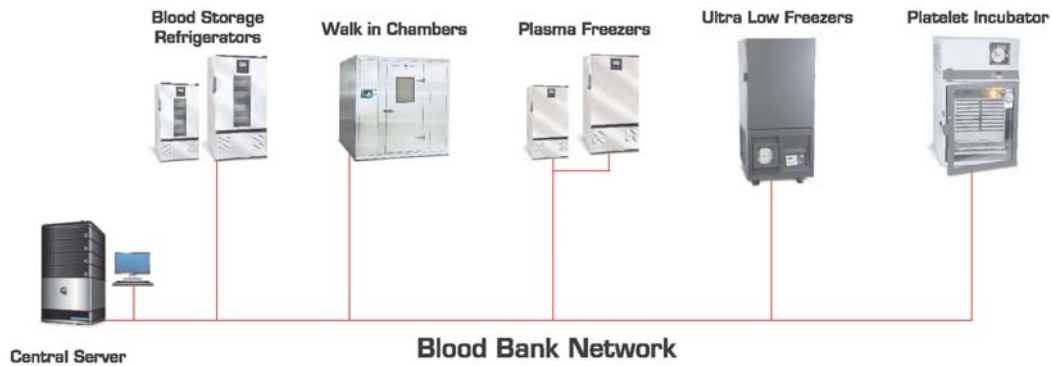


Specifications subject to change without notice

Walk-in Chambers



CHAMBERS CONNECTIVITY CHART



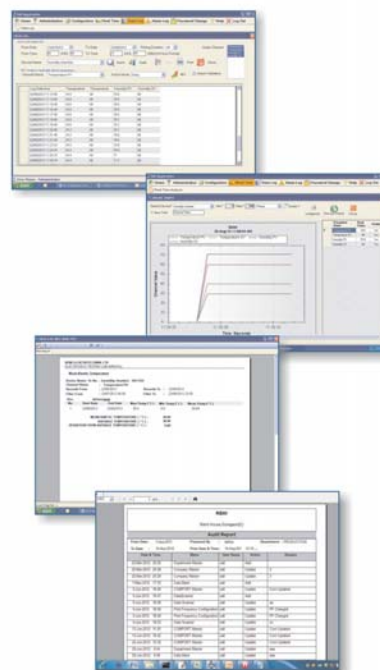
Specifications subject to change without notice

Walk-in Chambers

Features of Remi *Datasoft* Software complying to 21 CFR Part 11

(As per WHO and USFDA guidelines)

- Multiple level alpha numerical passwords with password ageing
- Electronic signature
- Secured audit trail report
- Alarm report with mention of alarm condition
- Mean Kinetic Temperature, can be calculated for user defined period
- Reports in graphical and tabular form
- Data stored in PC server with LAN connectivity, accessible on any PC with password authentication
- Blocked user access after three unsuccessful login attempts
- Multi chamber data acquisition on single software supports 30 chambers
- Supports communication through Ethernet / RS-485
- Supports web based online remote access via Ethernet
- GSM mobile alert on six cell phones via SMS in case of deviations
- Biometrics system for door access by authorized person with log
- Online and offline Trends



Optional Accessories

- PLC Based Control System with HMI Touch Screen instead of PID controller with password protection
- Software compliant to 21 CFR Part 11 requirements
- Standby Refrigeration System
- GSM Mobile Alert for six Numbers
- Multipoint Temperature data logger with print out facility
- Biometrics system for door access by authorized person with log

	TECHNICAL DATA	
	WBR-80	WBR-100
Internal Volume (Liters)	8000	10000
Storage Capacity (Blood Bags)	1000	1500
Internal Dimensions W x D x H (mm)	2000 x 2000 x 2000	2000 x 2000 x 2500
External Dimensions W x D x H (mm)	2160 x 2950 x 2160	2160 x 2950 x 2660
Temperature Range & Accuracy	2° C to 6° C, Accuracy: ±1° C	
Internal Body Material	Stainless Steel 304 grade	
External Body Material	Powder Coated CRCA Steel	
Insulation	80 mm minimum, CFC free polyurethane foam	
Illumination	Fluorescent Tubes	
Control & Display	Microprocessor based PID control system with large 4" LCD Display	
Power Failure Alarm	Audio Visual Alarm	
Door Open Alarm	Audio Alarm in case door open for over one minute	
Electrical	220-240 volts, 50Hz, Single Phase	

Specifications are Subject to change without prior notice.

Specifications subject to change without notice

V. S. International Pvt. Ltd.

A-204, Neelam Centre, Hind Cycle Road, Worli, Mumbai - 400 030., INDIA.
 Contact : +91 22 4333 3900 / 2498 8777 Fax: +91 22 6660 8779